



## Oceanic Laminate Flooring - Fitting Guide

Please read this document in full before commencing installation of this laminate flooring product.

No boards should be fitted that contain defects that are visible in either the décor layer, wear layer or with damage to any locking joint or edge to the board. Once a board is fitted it is deemed to be perfect and would not be considered in any future warranty claim. Should damaged boards be installed, then uplift and replacement would not be the liability of Wanabiwood PTY Ltd. We accept no liability for damaged boards that have been installed.

### **General Notes before we start.**

Oceanic is a low swell, highly water-resistant laminate floor but care should still be taken to ensure that the sub floor is below 12% on a Romus meter, the humidity of the room is between 30% and 70% and the temperature of the room should be between 15 and 30 degrees Centigrade.

The floor planks must be acclimatised prior to installation and the boxes should be stored for a period of not less than 48 hours in the room where the product is to be installed.

The sub floor must be sound, smooth, free of dust and any contaminants and have a variation of not more than 3mm over a 3m radius. Grout lines in excess of 5mm should be filled and smoothed.

Oceanic must be fitted on an approved Combi lay or acoustic underlay that has a built-in moisture membrane to protect the product from moisture from below. It must not be fitted directly onto a sub floor.

Within each range there are several different decors. It is important that stock be drawn from several boxes at a time to ensure an even mix of the patterns within the range, no claim can be made for regular patterns should they not be distributed evenly within the installation.

Although the core is water resistant, it is imperative that all cut ends and sides are treated with Wanaseal wax sealant after cutting. This will insure that, should there be a spill, water cannot enter any of the cut boards. Failure to apply Wanaseal Wax could invalidate any claim against moisture damage.

Oceanic is a floating floor and as such, this product will expand and contract with temperature and humidity. A minimum of 8mm expansion gap must be allowed around all exterior edges. Pinning by skirtings, floor trims and heavy furniture should not be allowed.

The maximum area that can be fitted without additional expansion gaps is 6m x 6m.

Ensure that there is a minimum overlay of at least 300mm on all end joints and avoid a regular plank pattern on the floor.

Oceanic is fade resistant but care should be taken to avoid prolonged exposure to sunlight.

Underfloor heating can be used with Oceanic Laminate Flooring.

Please contact Wanabiwood for the recommended products to be used. Please check that if you have existing underfloor heating, that it is acceptable for use.

For warranty terms please consult our website at [www.wanabiwood.co.za](http://www.wanabiwood.co.za)

## **Tools Required**

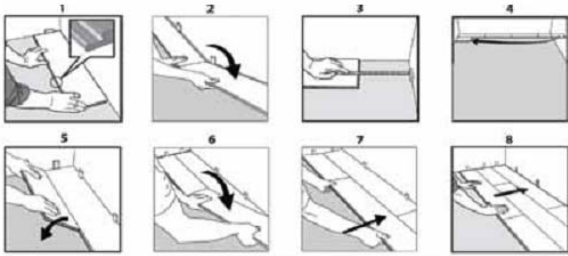
1. Tape Measure
2. Straight Edge, 3m minimum
3. Metal Hammer
4. Tapping Block
5. Jigsaw with down cut fine blade
6. Laminate Guillotine for ease on end cuts
7. Pulling bar
8. Pencil
9. Spacers
10. Backing cord or undercut saw
11. Silicone gun
12. Circular Saw (optional)
13. Small 1cm paint brush
14. Wanaseal sealer

## **Sub floor preparation**

1. Sweep entire sub floor and ensure its free from nails, grit, stones or high spots
2. Check the floor is sound with no loose areas
3. Place a straight edge over the floor and make sure it is level within the 3mm over a 3m radius and attend to any high or low spots.
4. Do a moisture test, this should be below 12% on a prontemeter or 3% on a tramex
5. If fitting over a wood floor, excluding parquet, check that there is sufficient ventilation under the floor. Failure to do so will result in a failure of the wooden subfloor over time.
6. If parquet blocks are fitted, remove it. We do not recommend fitting on top of parquet blocks, remove or neutralise any remains of bitumen if it is found.

## **And now to fit**

1. Measure room for squareness and calculate the dimensions and planks to avoid having a small piece of less than 50mm as a last row. If need be, cut the first row of plank along the length to avoid a small piece on one side of the floor. Do the same on the long joints to ensure that you have at least a 300mm piece at the end of each row.
2. Lay out the first piece of underlay and trim, this should be laid plastic down to the floor.
3. Starting from the left side, lay out the first row of planks. Cut to length and insert the spacers along the wall. Try and place them in the joints of the floor.
4. Apply wanabiwood Wanaseal to all cut pieces of the flooring. This can be easily applied with a small brush. Wipe off any excess that is on the face of the board. Failure to apply this could invalidate the moisture warranty.
5. Take the off cut from the end and place at the starting row again. Lift end to 30° push in and lay down. Take the next full board, insert the same, then tile whole row to 30°, pull in the long joint, tap with the tapping block and lay the row down, ensuring that the previous long and short joint are still locked in. Continue this down the row, ensuring that the expansion gaps stay in place.
6. When you reach the last row, lay the last planks on top of the last row exactly, then use another plank against the wall as a template. Mark planks, trim with the saw and insert using the pulling bar to lock the long joints in.
7. If there are doorways, there are two options. The neatest is to undercut the doorframe using an undercut saw and insert the flooring under the doorframe, this allows for expansion. Should this not be possible, you need to cut the 8mm expansion around the aperture of the frame. This gap can then be filled with backing cord and silicone over, with a colours acrylic sealer or silicone. It is not recommended to fill the expansion gap with any filler or silicone. This could hinder expansion of the flooring.
8. Should the room be over 6m x 6m, then an expansion gap must be installed and covered with a T profile expansion.
9. When fitting door trims, please ensure they do not pin or hinder the expansion of the flooring.



### **Finishing Touches**

1. Once fitting is completed, sweep entire floor with a microfibre broom to remove all dirt and dust.
2. Fit either skirting or quarter rounds to the exterior of room, on plinths where applicable. Ensure there is space under these to allow for expansion. It may look nice, but avoid filling any gaps with acrylic or silicone, this will pin the floor.
3. Fit all door trims, again ensuring that they are not impeding the movement of the laminate flooring.

### **Maintenance and Cleaning**

Oceanic Laminate Flooring is produced to the highest standards, but like any flooring, regular care will ensure that it give you years of happiness and remains trouble free.

1. Sweep or vacuum regularly with a soft broom or soft vacuum head. Avoid the use of a beater bar upright cleaner
2. To remove daily streaks on the floor a spray type laminate cleaner and micro fibre mop should be used. Avoid traditional spaghetti mops and copious amounts of water.
3. The surface of Oceanic Laminate Flooring is sealed, do not apply any form of wax, polish or sealer to the floor without first obtaining permission in writing from Wanabiwood. Never use oil, soap, wax or solvents to clean the floor.
4. Use walk-off mats at all exterior doorways. Do not use rubber mats as these can affect the lustre of the floor and change its appearance.
5. Use felt protectors under all chairs, tables and movable furniture. Castor chairs must have either soft castors fitted or a suitable chair mat should be used.
6. Never drag furniture or heavy objects across the floor, rather lift them.
7. Spiked heels or damaged foot ware could damage the flooring along with any heavy objects that are dropped on the floor.
8. Keep pets nails trimmed wherever possible.
9. Should you manage to damage the floor in any way, please contact wanabiwood technical on 072 821 5307 immediately.
10. Any left-over planks should be stored horizontally in a dry clean space for emergencies that could occur.

Should there be any questions pertaining to the installation or care of Oceanic Laminate Flooring, then please contact us at [enquiries@wanabiwood.co.za](mailto:enquiries@wanabiwood.co.za) or call 072 821 5307